

ARTIFICIAL™ INTELLIGENCE



ARTIFICIAL INTELLIGENCE™ NEW DENMARK SHOE LINE IN SOLID AND PRINT MATERIALS

- Footbed recovery system for lasting comfort
- High performance padded comfort technology
- Ergonomically designed footbed maintains posture and reduces soreness
- Advanced Patented Silver Technology Multi-Layer Moisture Management system
- Dual Moulded Construction adds stability and lateral support
- Handcrafted construction to the Highest Quality Standards:
 - Top grade leather uppers, linings and footbed
 - 200 rust proof staples
 - Padded insert for increased comfort
 - Non-marking soles
 - Roomy toe box design provides free
- Rocker design moves foot forward and helps reduce fatigue
- Inhibits 99.79% MRSA Bacteria
- Inhibits odor with Anti-bacterial and Anti-microbial properties
- Smart Foam converts moisture to a gel-like substance which evaporates to keep your feet dry
- Regulates temperature so your foot is always in the Comfort Zone



HEALTHCARE



HOSPITALITY



KEEPS FEET DRY



RESISTS ODOR

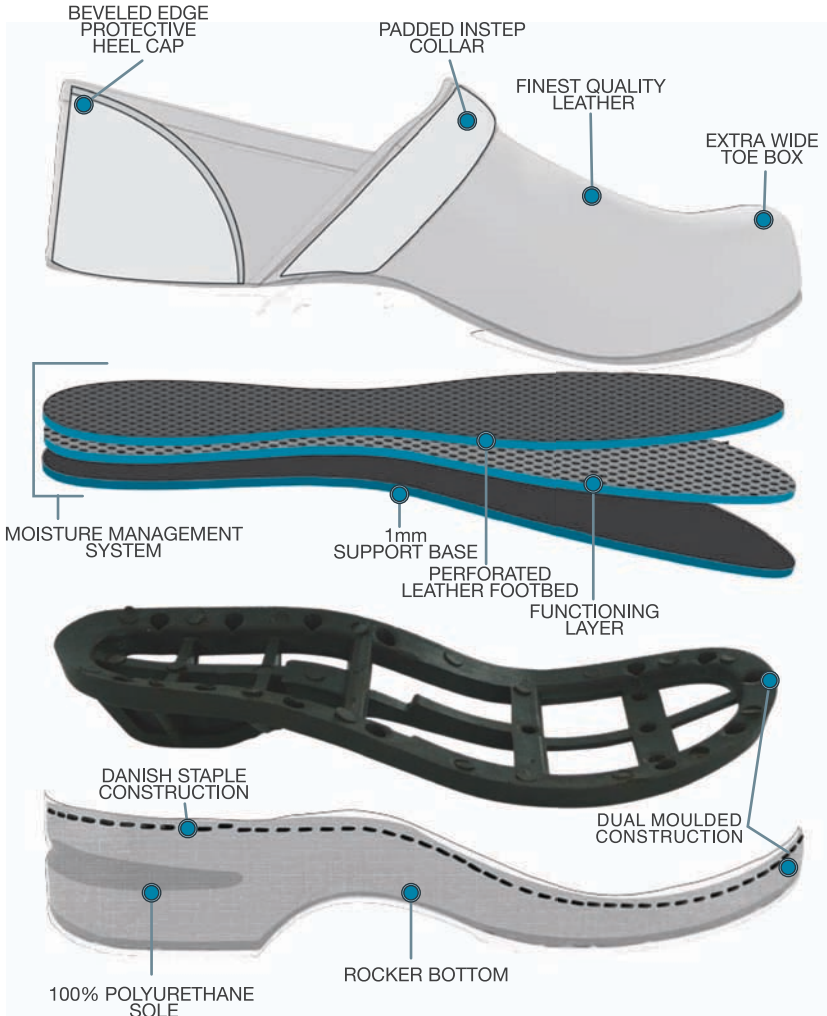


REGULATES TEMPERATURE

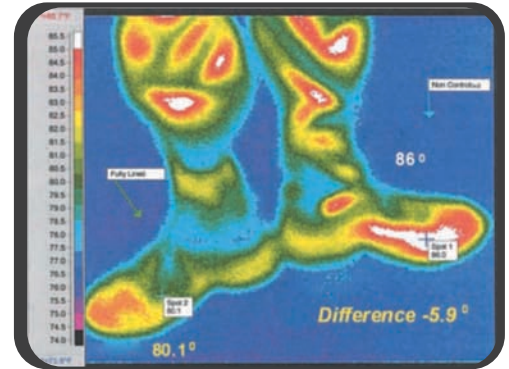


CUSHIONED COMFORT

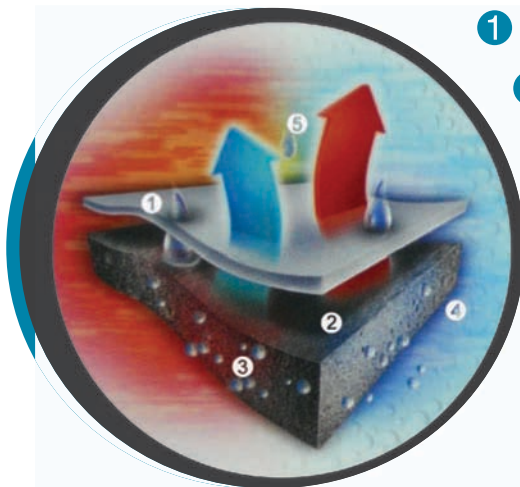
a ARTIFICIAL INTELLIGENCE™ INTELLIGENCE



FOOT TEMPERATURE COMPARISON WITH AND WITHOUT ARTIFICIAL INTELLIGENCE INSERT



HOW OUR MOISTURE MANAGEMENT SYSTEM WORKS



- 1 Moisture comes into contact with the Silver insert layer that wicks away moisture.
- 2 An Ion exchange takes place turning our insert into an anti-microbial agent. The Silver is irreversibly bonded inside the foam for the life of the insole.
- 3 The moisture spreads the Silver Ions, thus enhancing its anti-odor, temperature regulatory, anti-bacterial, and anti-microbial properties.
- 4 The moisture turns into a gel like substance in the Smart Foam to keep your feet comfortable.
- 5 Moisture evaporates from the Smart Foam to keep your feet dry.